

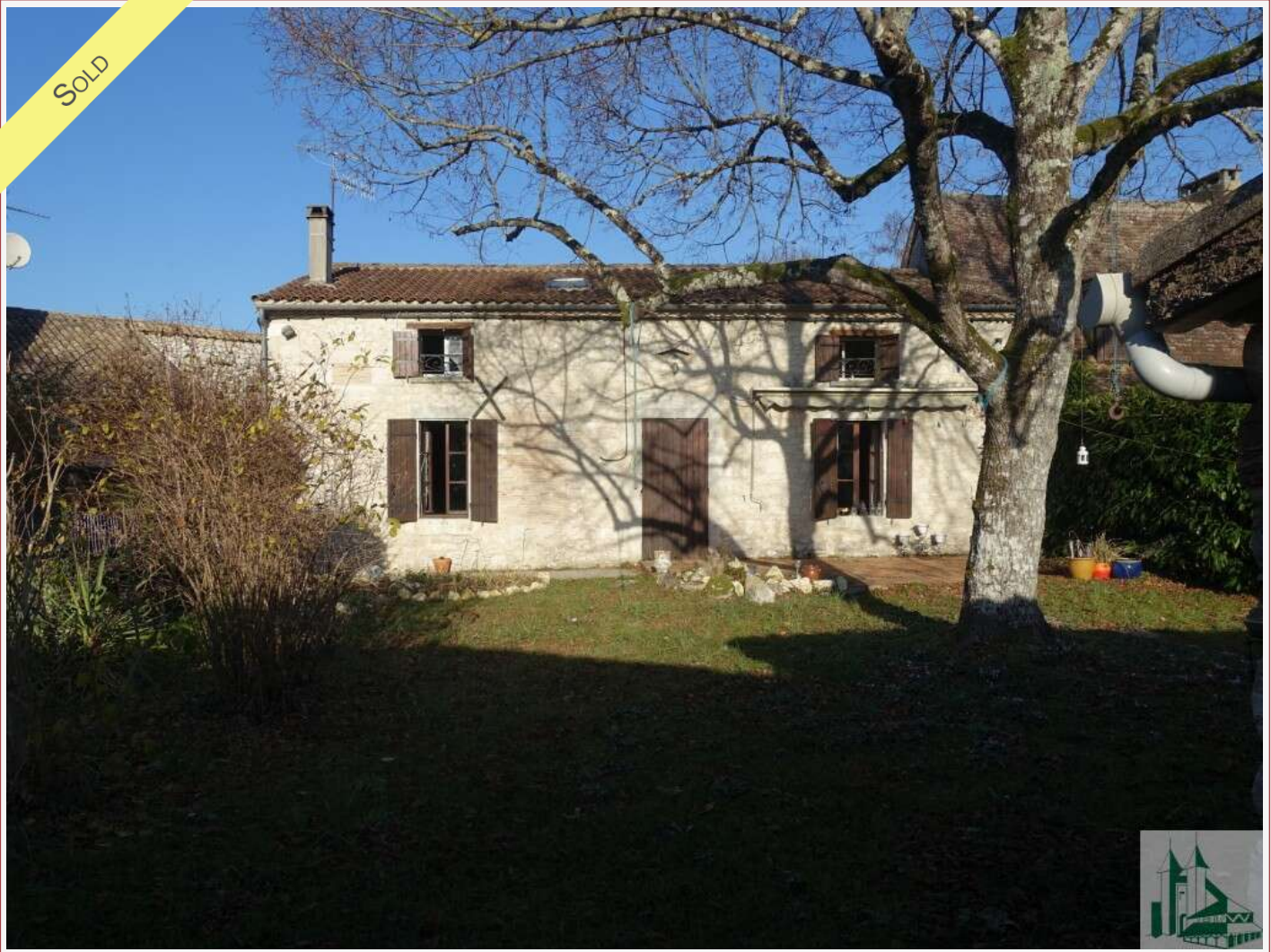


Agence Immobilière Valadié

Professionnels de la transaction immobilière depuis 1960

Ref : 1440

• House - Issigeac •



DETAILS

Land surface: 350 m²

Number of bedrooms: 4

Number of levels: 1

Type of heating: Fuel oil

Drainage/sewage: Septic tank

Swimming pool: No

Ground floor living: No

Work needed: Finitions / Décoration

Fireplace: Yes open hearth

Built: 1850

Logement économe

≤ 50 A

51 à 90 B

91 à 150 C

151 à 230 D

231 à 330 E

331 à 450 F

> 450 G

Logement énergivore

DPE en cours

Attached house with lots of character in a southern Perigord hamlet 15 minutes from Bergerac and its airport with 4 bedrooms; beautiful garden, large open plan living space of 100m² with kitchen, living room and dining room.

210 m² living

350 m²

- Issigeac -

Grand Rue

24560 Issigeac

Tel : 05 53 58 68 26

issigeac@valadie-immobilier.com

Price

187 000 €

The agency fees are entirely at the cost of the seller



Agence Immobilière Valadié

Professionnels de la transaction immobilière depuis 1960

• Description ref n°1440 •

Ideal holiday home or permanent residence this attached character house in a southern Perigord hamlet 15 minutes from Bergerac and its Airborne has 4 bedrooms, nice garden, large open plan living space of 100m² with kitchen, living room and dining room, old stone sink and open fire; 16m² shower room and WC Independent; Upstairs large landing 20m² ; bedroom I 20m² ; Bedroom II 14m²; Future bathroom 10m²; bedroom III 20m²; bedroom IV 16m², Gallery / Library 5m²: Outside 20m² terrace with BBQ; Wood store 17m²; Garden 250m²; Parking 50m²; Garage 50m²; Heating Oil and Wood.

