

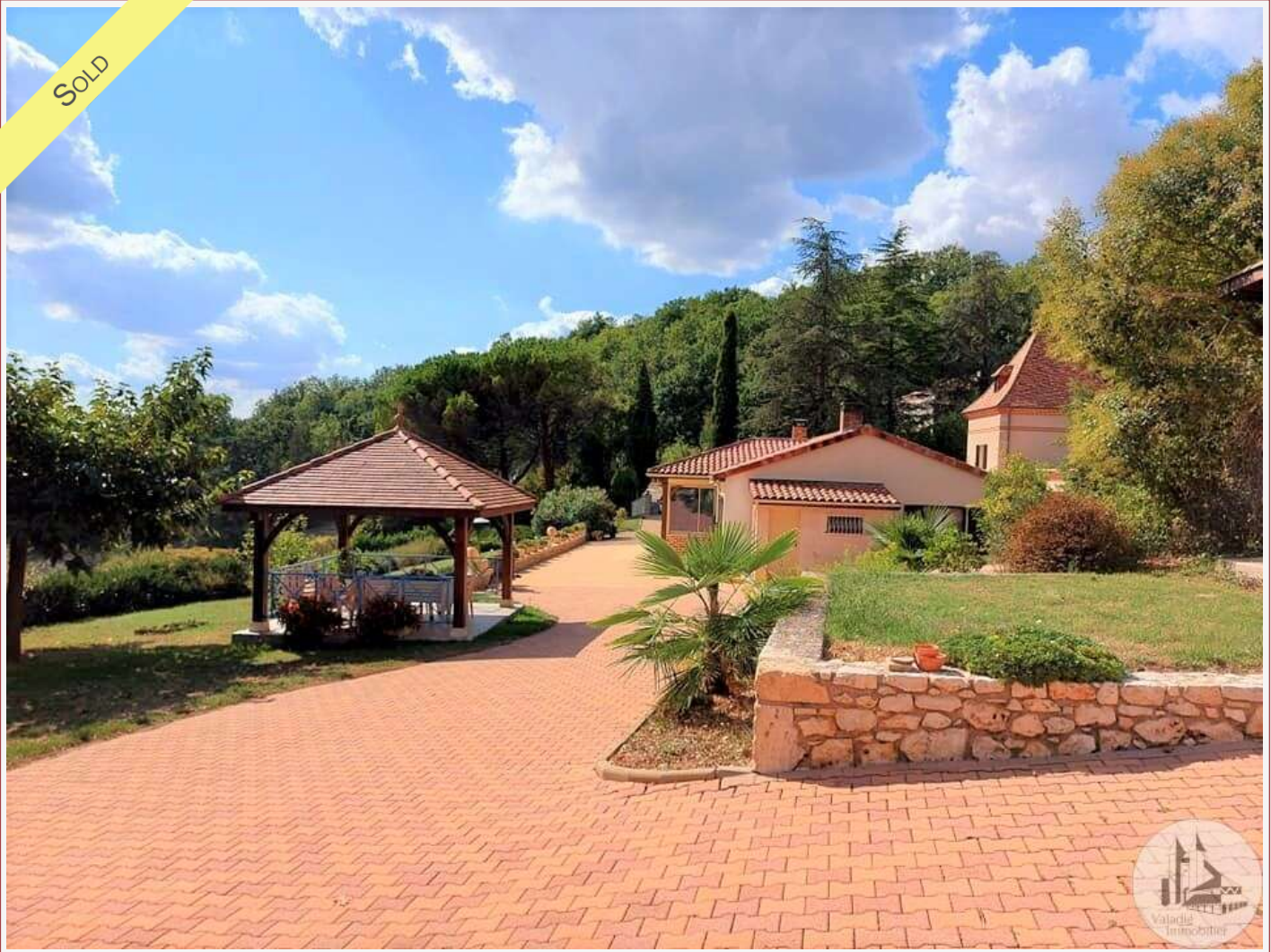


# Agence Immobilière Valadié

Professionnels de la transaction immobilière depuis 1960

Ref : 6359

• House - Penne-d'Agenais •



## DETAILS

**Land surface:** 1.63 ha

**Number of bedrooms:** 2

**Number of levels:** 0

**Type of heating:** Wood + Electric

**Drainage/sewage:** Unknown

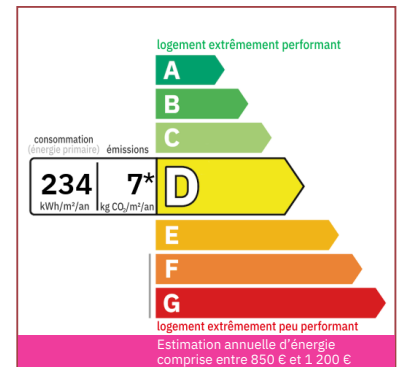
**Swimming pool:** No

**Ground floor living:** Yes

**Work needed:** No work

**Fireplace:** Yes closed hearth

**Built:** Not specified



Located on the heights of the medieval village of Penne D'Agenais, you will enjoy a breathtaking view of the Lot valley, from the house and the garden of more than one hectare.

276 m<sup>2</sup> living

16 300 m<sup>2</sup>

Frédérique Bidois

Agent commercial

Tel : 06 74 55 44 56

<https://valadie-immobilier.com>

[frederique@valadie-immobilier.com](mailto:frederique@valadie-immobilier.com)

Price

381 000 €

The agency fees are entirely at the cost of the seller



# Agence Immobilière Valadié

Professionnels de la transaction immobilière depuis 1960

## • Description ref n°6359 •

It is at the end of a path that this property will welcome you on 265 m<sup>2</sup> of living space with all the comforts, without any work to be planned and on one level.

You will enter through a small hallway which will give you access on one side to an equipped and functional kitchen and on the other side, to a bright living room with its fireplace closed by an insert with a heat distributor in the other rooms. There is also an adjoining bedroom separated by a partition with this living room.

A corridor serves a bathroom, a bedroom with its dressing room and overlooks a laundry room which could become a summer kitchen with outside access.

A large veranda, currently in the dining room, well equipped with electric shutters, allows us to enjoy the view overlooking the valley, the hills .... during our meals. (arrivals for air conditioning provided).

A 200 m<sup>2</sup> terrace surrounds the property and allows outdoor dining in the summer.

Outside, stands a dovecote converted into a bedroom with its own bathroom and the possibility of adding a kitchenette. In the attic, a very beautiful framework has been preserved.

You can park your vehicle in the shelter, with the different garages or carports, three in total.

A large workshop can easily be arranged. And a greenhouse with the proximity of a vegetable garden, shelters the wood....You will find a vegetable garden: cherry tree, apricot tree, fig tree.....And a well with its pump offers water all year round for watering.

Aluminum double glazing

Roller shutters and shutters

Two septic tanks (dovecote and house)

Swimming pool area

