

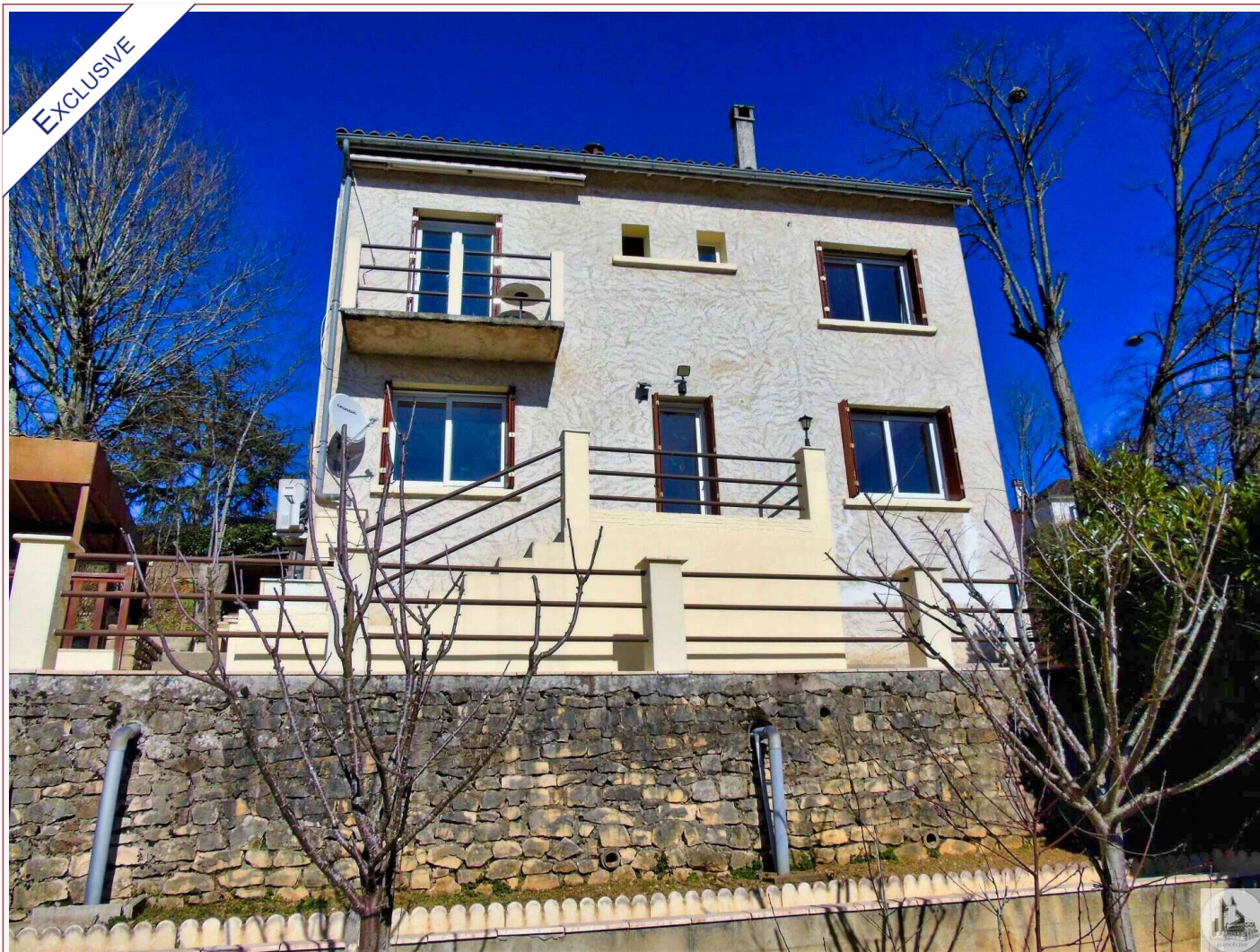


Agence Immobilière Valadié

Professionnels de la transaction immobilière depuis 1960

Ref : 8577

• House - Puy-l'Évêque •



DETAILS

Land surface: 527 m²

Number of bedrooms: 3

Number of levels: 1

Type of heating: Clim réversible

Drainage/sewage: Everything in the sewer

Swimming pool: No

Ground floor living: No

Work needed: No work

Fireplace: No

Built: 1959

Logement économe

≤ 50 A

51 à 90 B

91 à 150 C

151 à 230 D

231 à 330 E

331 à 450 F

> 450 G

Logement énergivore

DPE en cours

House built in 1959 located close to all shops, schools, colleges within walking distance in a charming medieval village.

117 m² living

527 m²

Frédérique Bidois

Agent commercial

Tel : 06 74 55 44 56

<https://valadie-immobilier.com>

frederique@valadie-immobilier.com

Price fees included

120 000 €

Agency fees: 6,2 % VAT included*

Price without fees: 113 000 €

*The agency fees are entirely at the cost of the purchaser



Agence Immobilière Valadié

Professionnels de la transaction immobilière depuis 1960

• Description ref n°8577 •

This two-story house is laid out as follows:

Upstairs, you enter a bright, open-plan living area (living room, dining room, and kitchen) of 29.50 m² with a lovely glass roof, followed by a bedroom of 10.40 m² and a shower room of 3.55 m².

A staircase leads to the garden level, which includes a master suite of 13.60 m², a bedroom of 10.70 m², a billiard room of 18 m², and a cellar of 9.48 m².

Its heating and reversible air conditioning system provides both comfort and energy savings.

A 14.50 m² garage provides parking for one car.

Double-glazed PVC sliding doors

Mains drainage

Louvered shutters

Option to sell furnished

Outside, an 11m² summer garden and a 20m² covered terrace allow you to enjoy the outdoors and take in a beautiful view of this historic tourist village

